

Kansas Department of Commerce Broadband Acceleration Grant

Public Comment

"IdeaTek – Sedgwick County" Application

March 2022

Evidence presented by



SKTC.net

112 S. Lee
PO Box 800
Clearwater, KS 67026
888.758.8976

COMMENTS

Over the next twelve months, SKT is continuing a phased fiber optic broadband infrastructure build, which will include 130 premises in rural Sedgwick County near MacArthur Road and 135th Street. This is an area targeted by the “IdeaTek – Sedgwick County” Broadband Acceleration Grant Application. SKT is currently completing phase 1 to extend its fiber network in the area. Pending the availability of project supplies, this will set up SKT to enter phase 2 this year, which includes fiber to those 130 premises and other planned areas of growth. Ahead of the fiber investment, SKT deployed Fixed Wireless to reach a subset of premises as a stopgap until fiber would be deployed.

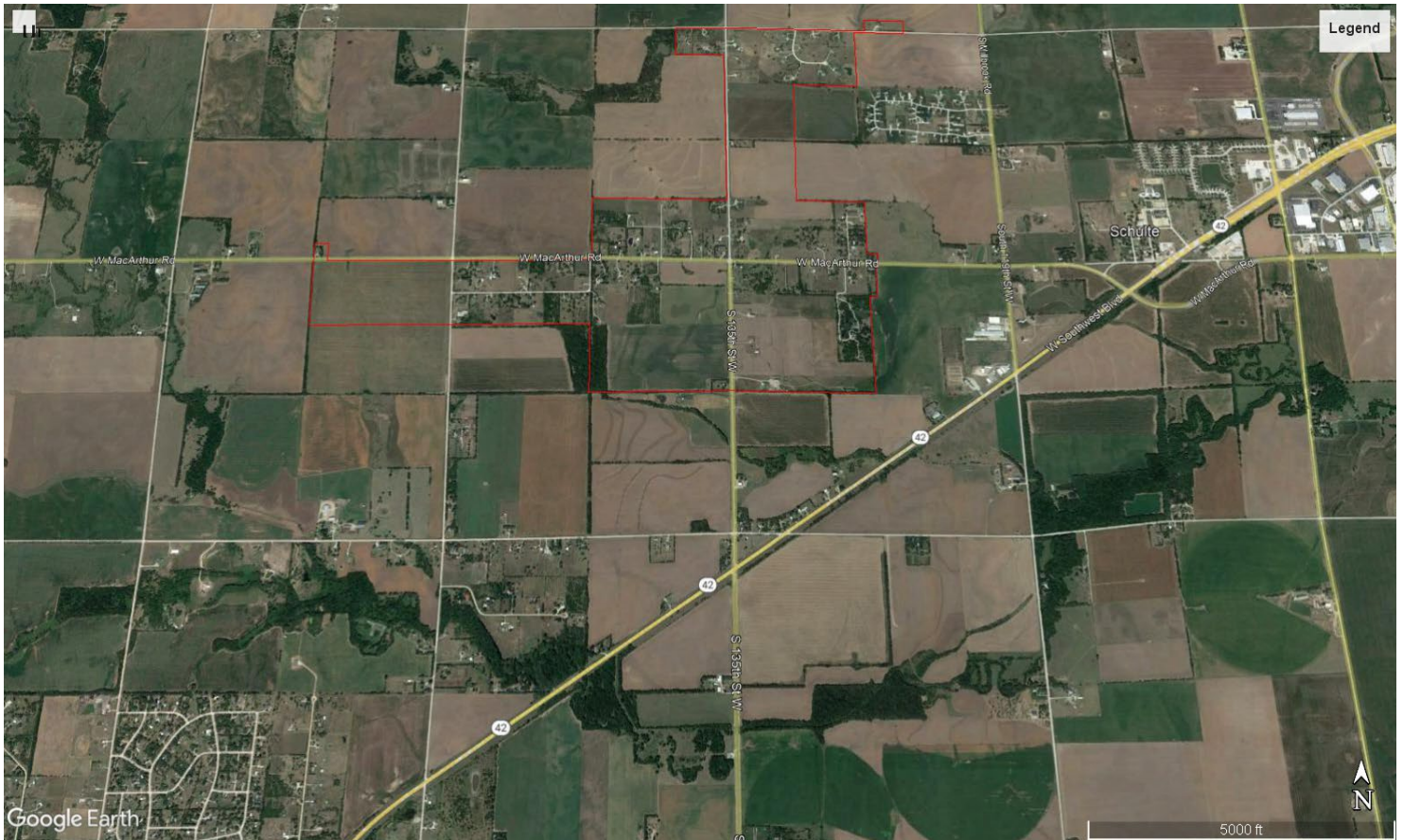
According to FCC data, these locations do not have access to reliable broadband service, limiting or eliminating opportunities for remote work and education, telemedicine, and online commerce transactions – which have exponentially risen in importance amid the pandemic and will only continue to be essential for the wellbeing of rural Kansans. The new SKT fiber infrastructure will bring 1 Gbps/1 Gbps broadband to these locations and allow access to these vital services.

SKT participates in the Affordable Connectivity Program (ACP), which provides eligible households with a monthly discount on broadband service. ACP is available to customers in all SKT service areas and will be available in these areas.

Screenshots of these areas have been included on subsequent pages, along with information from FCC mapping.

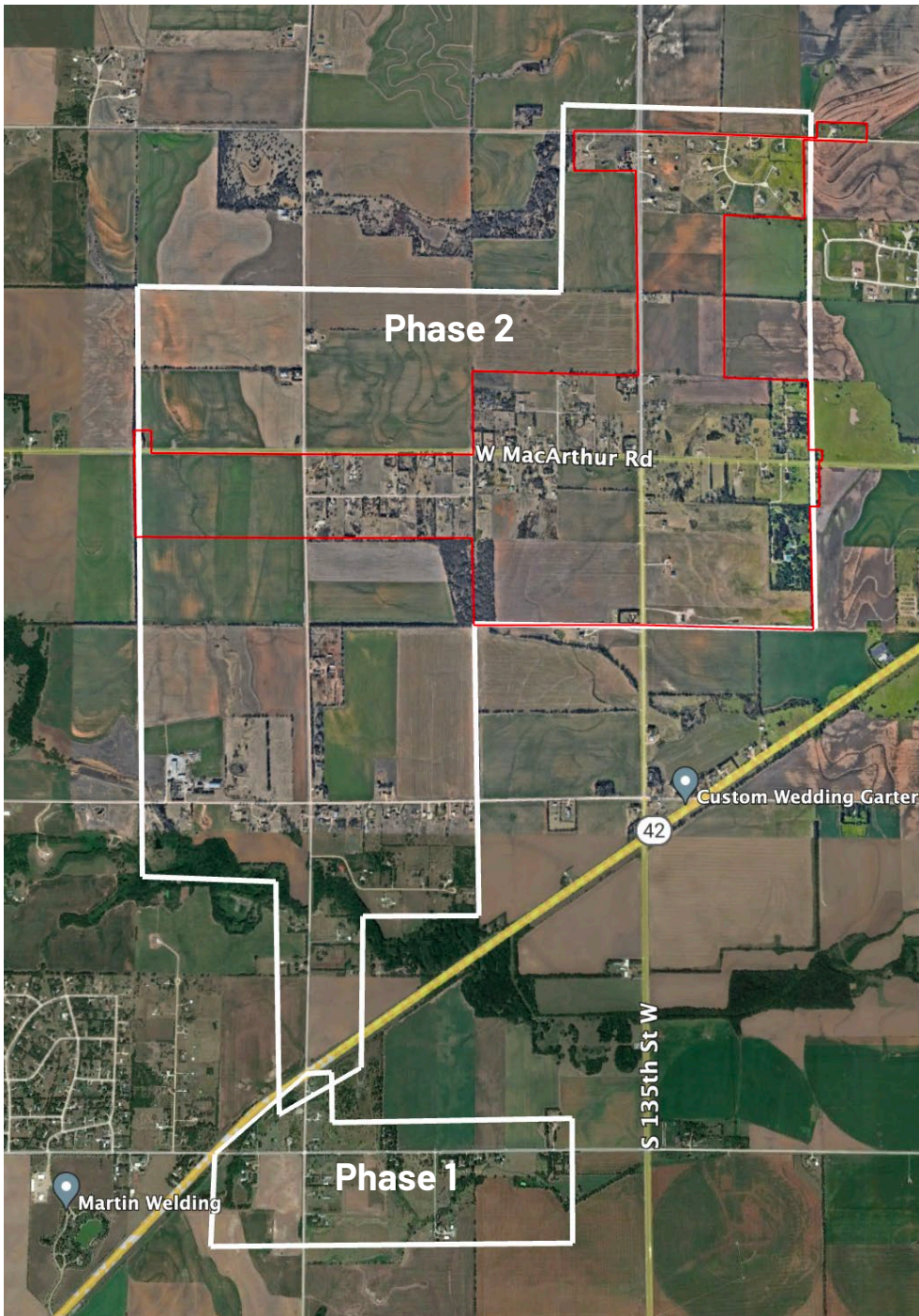
MAPS | IDEATEK PROPOSAL

Rural Sedgwick County



MAPS | SKT RESPONSE

Rural Sedgwick County

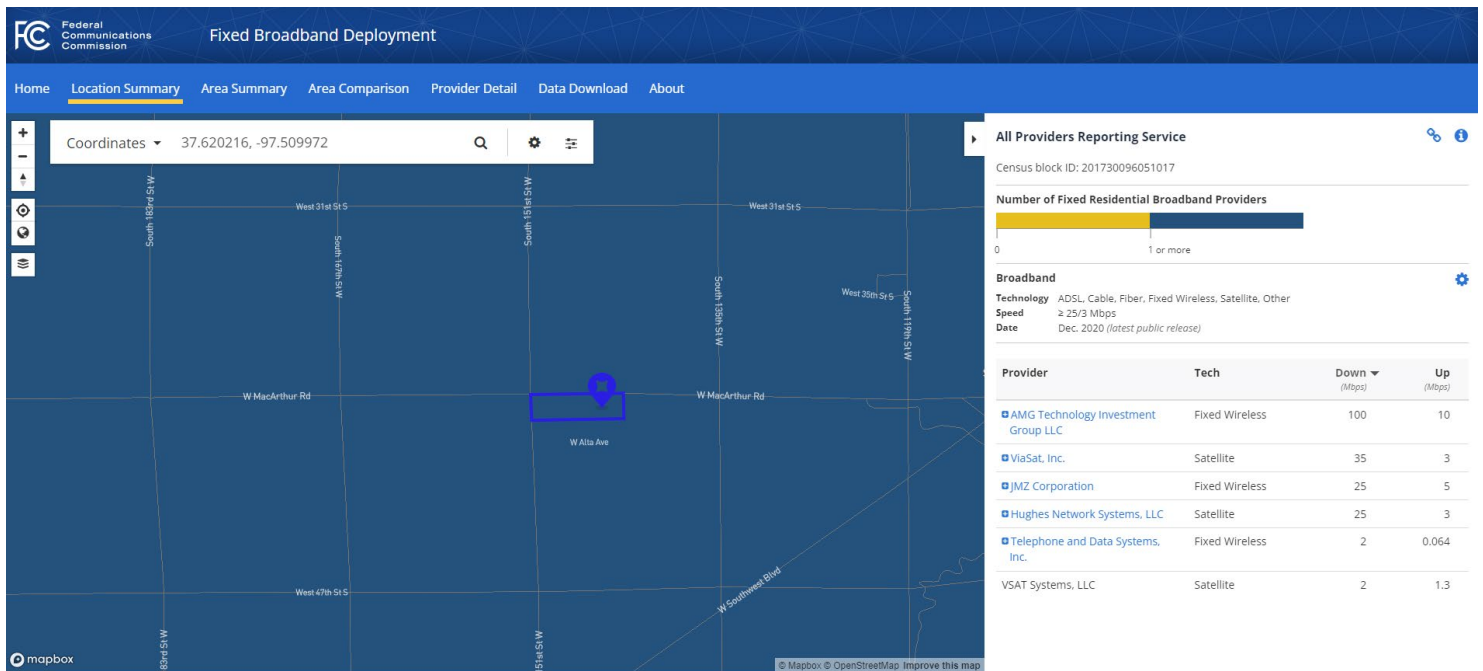


SKT Broadband Service

White Outlined Area
Fiber
1 Gbps/1 Gbps
SKT Funded – 100%

MAPS | FCC BROADBAND

Rural Sedgwick County



Federal Communications Commission

Website Policies & Notices

CATEGORIES

BUREAUS & OFFICES